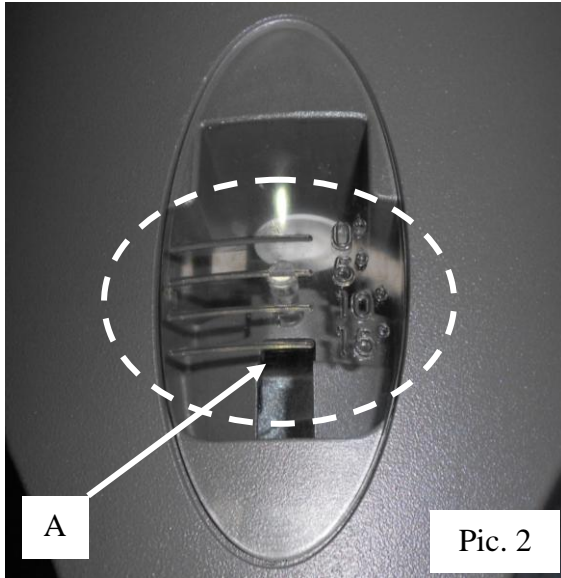
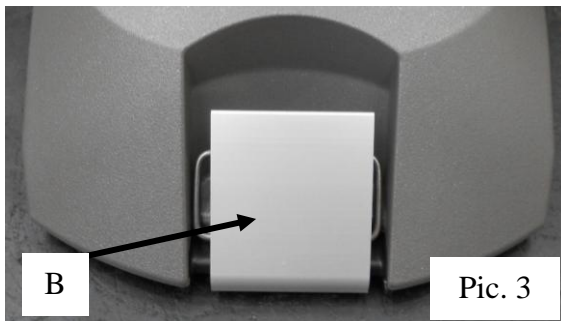




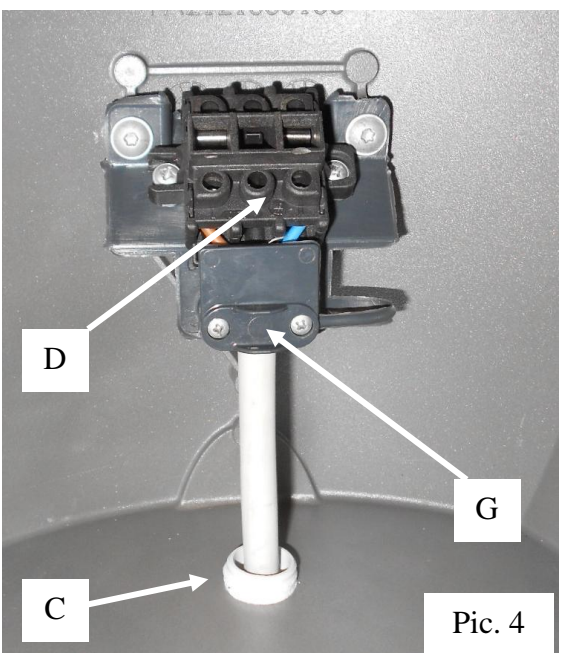
Pic. 1



Pic. 2



Pic. 3



Pic. 4

MOUNTING AND MAINTENANCE

Post-top or bracket mounting

The fixing system is suitable for Ø 60 or 76 mm poles and of Ø 42 or 60 mm brackets. To mount the luminaire it is necessary to correctly place the aluminum plate (E – Pic. 5) suitable for post-top mounting (Pic. 5) or bracket mounting (Pic. 6).

With this fixing system it is possible to use tilted brackets (0°, +5°, +10°, +15°). To place the luminaire parallel to the street it is enough to verify the correct entry of the bracket in correspondence of the graduate plate (A – Pic. 2).

Example: with +15° bracket, to place the luminaire parallel to the street, the bracket end have to coincide with "15°" mark.

The pole or the bracket is fixed to the frame with a stainless steel grub screws 12Ma in the aluminum plate (F – Pic. 5): tighten the grub screw with a set screw wrench of 6mm and apply a twisting moment of 20Nm.

To avoid the grub screw loosen, we supplied a further stainless steel 12MA nut to be clamped on the grub screw with an adjustable wrench of 19mm and applying a twisting moment of 20Nm.

Electrical connection

To gain access to the electrical line, it is enough to unlock the closing hook (B – Pic. 3). To connect the luminaire to the electrical line, punch the press cable membrane (C – Pic. 4) directly with the cable and connect the cable to the on-load switch (D – Pic. 4) respecting the polarity (Phase and Neutral) and the requirements shown in section "ELECTRICAL LINE CONNECTION" at Pag. 2.

Hold the cable in position tightening the screws of the cable clamp (G – Pic. 4).

The luminaire has to be connected to the electrical line using a bipolar cable with nominal diameter between 7mm and 13mm. The used cable have to be respect the class II luminaire installation.

In case the luminaire is equipped with PLM option, before closing the luminaire, annotate the serial number of the control device.

Electronic parts maintenance

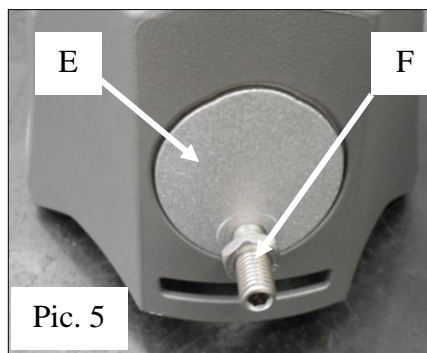
When it is necessary, it's possible to take away the gear tray turning the knob (G – Pic. 8).

Once the operation is completed, place the gear tray in its original position and fix it turning the knob (G – Pic. 8). Close the lower frame and block it with the closing hook (B – Pic. 3)

Focus adjustment

The reflector of the luminaire has been designed to function with different road width witouh any luminaire inclination. The reflector can be placed in 7 positions, to adapt the photometrical solid to the width of the street.

To change lamp focus it is enough to loosen the 2 side screws (H – Pic. 7) place the optic in desired position, using the indication shown on the reflector, and block it with the 2 screws (H – Pic. 7).



Pic. 5



Pic. 6

Post-top mounting

Bracket mounting

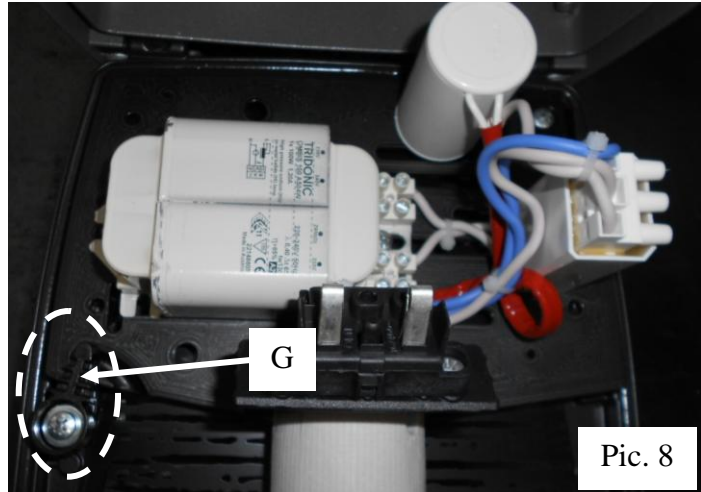
MOUNTING AND MAINTENANCE INSTRUCTION

A2



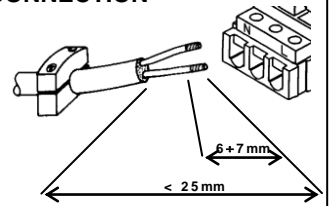
Lamp type – Weight

Model	Lamp type				Weight [gr]	
	SHP-T	MHL	CDO-T	CPO	Empty	With C.G
A2	50W	50W	50W	-	5.500	6.500
	70 W	70 W	70 W	-		6.500
	100 W	100 W	100 W	-		7.000
	150 W	150 W	150 W	-		7.500
-	-	-	45W	5.500	6.500	
-	-	-	60W			
-	-	-	90W			
-	-	-	140W			



ELECTRICAL LINE CONNECTION

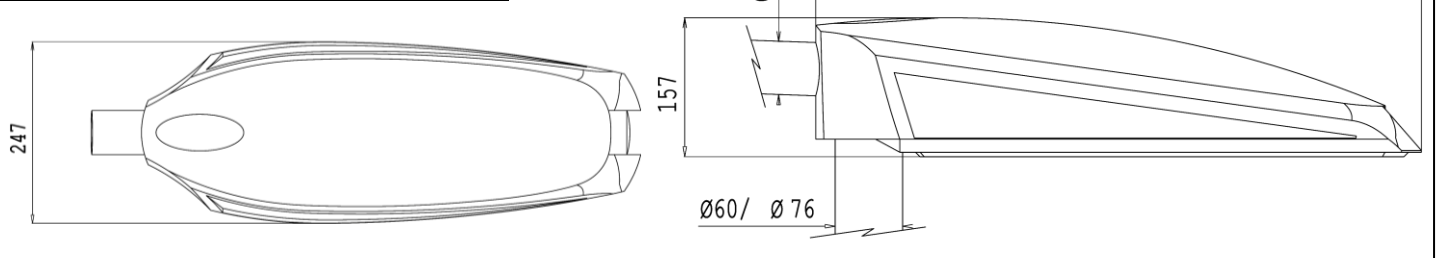
In order to insure double insulation characteristic of the feeder cable, we would advise that you first secure the feeder cable to the internal cable clamp, remove approximately 25mm of external sheathing, and 6mm of sheathing from the internal wires.




Suggested height of installation

Power [W]	H min [m]	H max [m]
50	3	7
70	5	10
100	7	12
150	7	13

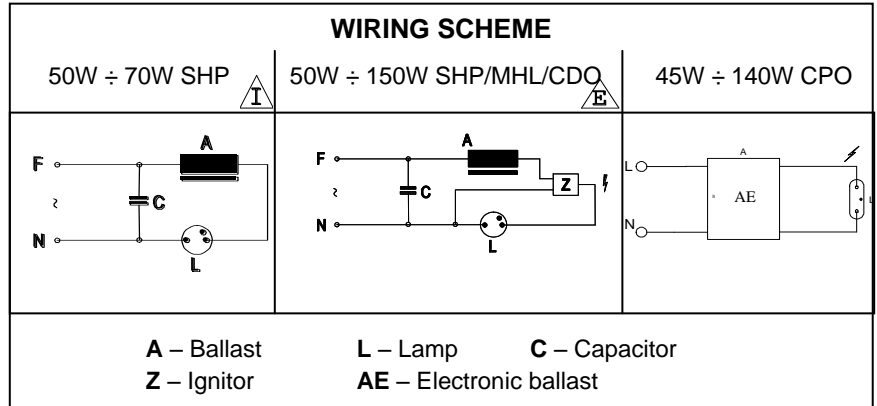
Form factor:	1.2
Side area:	0.08m ²
Base area:	0.14m ²



INFORMATION TO THE CUSTOMERS

 **Directive 2002/96/EC (Waste Electrical and Electronic Equipment - WEEE): information for users.**

This product complies with EU Directive 2002/95/EC. The crossed-out wastebasket symbol on the appliance means that at the end of its useful lifespan, the product must be disposed of separately from ordinary household wastes. The user is responsible for delivering the appliance to an appropriate collection facility at the end of its useful lifespan. Appropriate separate collection to permit recycling, treatment and environmentally compatible disposal helps prevent negative impact on the environment and human health and promotes recycling of the materials making up the product. For more information on available collection facilities, contact your local waste collection service.



ATTENTION

- The luminaire can be installed close to flammable surfaces.
- Class II luminaires must be installed in such a way that it is impossible for any exposed metal part to come in contact with electrical components.
- Luminaires for Metal Halide lamps must be always complete with its protective screen.
- For luminaires with Metal Halide lamps, damaged protective shields can only be replaced with original AEC Illuminazione's replacement shields.
- On luminaires for Metal Halide lamps use only UV Stop protected lamps.
- To preserve the lamp life, switch off the luminaire once a week.
- This luminaire has been designed and manufactured following all relevant standards. The installation must be done by experienced personnel and following the instructions.

The present instruction paper has to be kept for any future maintenance operation on the luminaire. Non compliance with the above will automatically release AEC Illuminazione Srl from any responsibility.

